

PB Power Pushbutton Switches

特徵

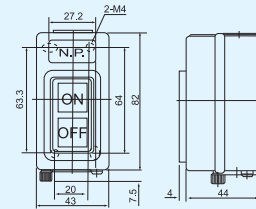
- 金屬系列外殼
- 塑膠系列外殼

特性

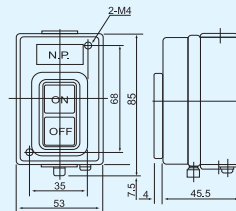
型號	規格	安裝型式	接線端子	外殼材質
PBSN-310	3 φ 10A 1.5KW	露外型	M3.5	鐵烤漆
PBSN-315	3 φ 15A 2.2KW		M4	
PBSN-330	3 φ 30A 3.7KW	露外型	M5	強化塑膠
PBS-315	3 φ 15A 2.2KW		M4	
PBS-330	3 φ 30A 3.7KW	埋入型	M4	鐵烤漆
PBSY-315	3 φ 15A 2.2KW		M4	
PBSY-330	3 φ 30A 3.7KW	露外型	M4	強化塑膠
PBS-2	3A 250VAC		M4	
PBS-3	3A 250VAC	埋入型	M4	強化塑膠
PS-111	6.5A		M4	

外觀和尺寸

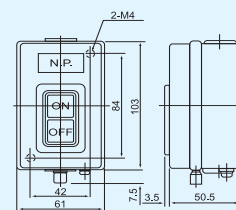
PBSN-310



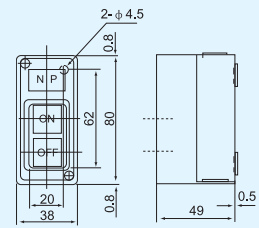
PBSN-315



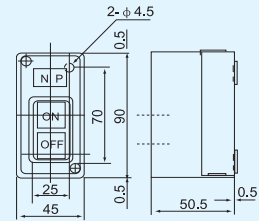
PBSN-330



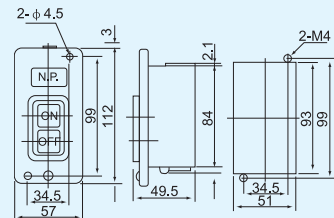
PBS-315



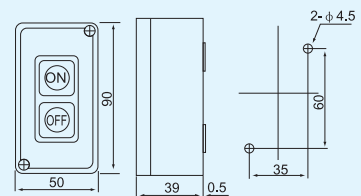
PBS-330



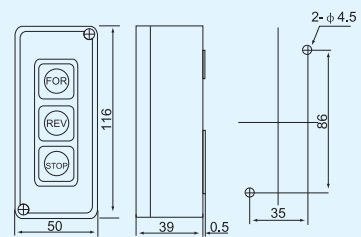
PBSY-315,330



PBS-2



PBS-3



PS-111

